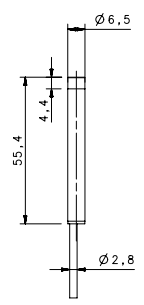
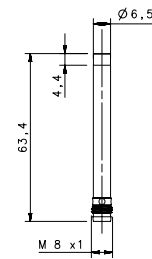
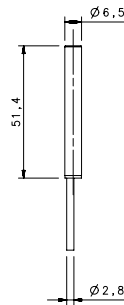
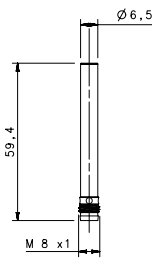


# BASIC M6.5



## STANDARD

- FLUSH

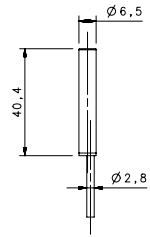
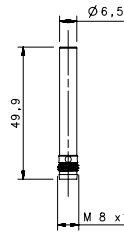
NON FLUSH

				M8 conn	cable	M8 conn	cable
				1,5 mm	1,5 mm	2 mm	2 mm
10-30 Vdc	PNP/NPN NO-NC	4 wires	order No.	---	---	---	---
10-30 Vdc	PNP NO	3 wires	order No.	IS-65-A1-S1 95B066050	IS-65-A1-03 95B064730	IS-65-C1-S1 95B066210	IS-65-C1-03 95B064890
10-30 Vdc	PNP NC	3 wires	order No.	IS-65-A2-S1 95B066090	IS-65-A2-03 95B064770	IS-65-C2-S1 95B066250	IS-65-C2-03 95B066300
10-30 Vdc	NPN NO	3 wires	order No.	IS-65-A3-S1 95B064970	IS-65-A3-03 95B064650	IS-65-C3-S1 95B066130	IS-65-C3-03 95B064810
10-30 Vdc	NPN NC	3 wires	order No.	IS-65-A4-S1 95B066010	IS-65-A4-03 95B064690	IS-65-C4-S1 95B066170	IS-65-C4-03 95B064850
10-30 Vdc	PNP NO-NC	4 wires	order No.	---	---	---	---
10-30 Vdc	NPN NO-NC	4 wires	order No.	---	---	---	---
10-30 Vdc	NO-NC	2 wires	order No.	---	---	---	---
20-250 Vac/Vdc	NO	2 wires	order No.	---	---	---	---
20-250 Vac/Vdc	NC	2 wires	order No.	---	---	---	---
20-250 Vac	NO	2/3 wires	order No.	---	---	---	---
10-30 Vdc	Analog 0-20 mA	3 wires	order No.	---	---	---	---
NAMUR amplifier	NAMUR	2 wires	order No.	---	---	---	---

<b>Nominal Voltage</b>	10-30 Vdc (-15/10%)	10-30 Vdc (-15/10%)	10-30 Vdc (-15/10%)	10-30 Vdc (-15/10%)
<b>Residual Ripple</b>	< 10%	< 10%	< 10%	< 10%
<b>Hysteresis</b>	< 10%	< 10%	< 10%	< 10%
<b>Max. Output Current</b>	200 mA	200 mA	200 mA	200 mA
<b>Min. Output Current</b>	---	---	---	---
<b>Residual Current</b>	< 1,6 mA	< 1,6 mA	< 1,6 mA	< 1,6 mA
<b>Voltage Drop</b>	< 1,2 V (I=100 mA)	< 1,2 V (I=100 mA)	< 1,2 V (I=100 mA)	< 1,2 V (I=100 mA)
<b>Operation Led</b>	Yellow	Yellow	Yellow	Yellow
<b>Switching Frequency</b>	1000 Hz	1000 Hz	1000 Hz	1000 Hz
<b>Start Up Delay</b>	< 50 ms	< 50 ms	< 50 ms	< 50 ms
<b>Repeatability</b>	< 3%	< 3%	< 3%	< 3%
<b>Short Circuit Protection</b>	Present (self-resetting)	Present (self-resetting)	Present (self-resetting)	Present (self-resetting)
<b>Electric Protection</b>	Against polarity reversal inductive loads	Against polarity reversal inductive loads	Against polarity reversal inductive loads	Against polarity reversal inductive loads
<b>Temperature Limit</b>	(-25 ... +70 °C)	(-25 ... +70 °C)	(-25 ... +70 °C)	(-25 ... +70 °C)
<b>Protection Degree</b>	IP67	IP67	IP67	IP67
<b>Cable Length</b>	---	2 m	---	2 m
<b>Cable Section</b>	---	3x 0,14 mm <sup>2</sup>	---	3x 0,14 mm <sup>2</sup>
<b>Housing Material</b>	Nickel-plated brass	Nickel-plated brass	Nickel-plated brass	Nickel-plated brass
<b>Active Face</b>	LCP	LCP	LCP	LCP
<b>Tightening torque</b>	---	---	---	---
<b>Weight - Cable Output</b>	---	80 g	---	80 g
<b>Weight - Connector Output</b>	40 g	---	40 g	---



# BASIC M6.5



## SHORT X2

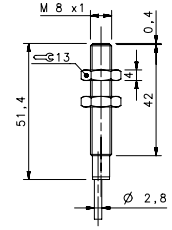
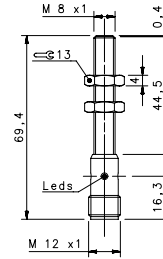
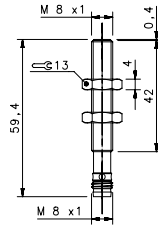
FLUSH

				M8 conn	cable
<b>NOMINAL SWITCHING DISTANCE</b>				<b>2 mm</b>	<b>2 mm</b>
10-30 Vdc	PNP/NPN NO-NC	4 wires	order No.	---	---
10-30 Vdc	PNP NO	3 wires	order No.	IS-65-G1-S1 95B066060	IS-65-G1-03 95B064740
10-30 Vdc	PNP NC	3 wires	order No.	IS-65-G2-S1 95B066100	IS-65-G2-03 95B064780
10-30 Vdc	NPN NO	3 wires	order No.	IS-65-G3-S1 95B064980	IS-65-G3-03 95B064660
10-30 Vdc	NPN NC	3 wires	order No.	IS-65-G4-S1 95B066020	IS-65-G4-03 95B064700
10-30 Vdc	PNP NO-NC	4 wires	order No.	---	---
10-30 Vdc	NPN NO-NC	4 wires	order No.	---	---
10-30 Vdc	NO-NC	2 wires	order No.	---	---
20-250 Vac/Vdc	NO	2 wires	order No.	---	---
20-250 Vac/Vdc	NC	2 wires	order No.	---	---
20-250 Vac	NO	2/3 wires	order No.	---	---
10-30 Vdc	Analog 0-20 mA	3 wires	order No.	---	---
NAMUR amplifier	NAMUR	2 wires	order No.	---	---

<b>Nominal Voltage</b>	10-30 Vdc (-15/10%)	10-30 Vdc (-15/10%)
<b>Residual Ripple</b>	< 10%	< 10%
<b>Hysteresis</b>	< 10%	< 10%
<b>Max. Output Current</b>	200 mA	200 mA
<b>Min. Output Current</b>	---	---
<b>Residual Current</b>	< 10 mA	< 10 mA
<b>Voltage Drop</b>	< 1,2 V (I=100mA)	< 1,2 V (I=100mA)
<b>Operation Led</b>	Yellow	Yellow
<b>Switching Frequency</b>	500 Hz	500 Hz
<b>Start Up Delay</b>	< 75 ms	< 75 ms
<b>Repeatability</b>	< 3%	< 3%
<b>Short Circuit Protection</b>	Present (self-resetting)	Present (self-resetting)
<b>Electric Protection</b>	Against polarity reversal inductive loads	Against polarity reversal inductive loads
<b>Temperature Limit</b>	(-25 ... +70 °C)	(-25 ... +70 °C)
<b>Protection Degree</b>	IP67	IP67
<b>Cable Length</b>	---	2 m
<b>Cable Section</b>	---	3 x 0,14 mm <sup>2</sup>
<b>Housing Material</b>	Nickel-plated brass	Nickel-plated brass
<b>Active face</b>	LCP	LCP
<b>Tightening torque</b>	---	---
<b>Weight - Cable Output</b>	---	80 g
<b>Weight - Connector Output</b>	40 g	---



# BASIC M8



## STANDARD

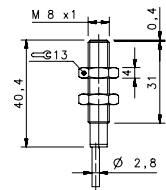
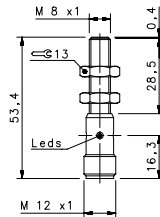
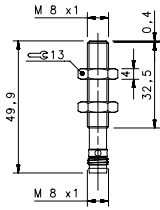
### FLUSH

				M8 conn	M12 conn	cable
				1,5 mm	1,5 mm	1,5 mm
10-30 Vdc	PNP/NPN NO-NC	4 wires	order No.	---	---	---
10-30 Vdc	PNP NO	3 wires	order No.	IS-08-A1-S1 95B061141	IS-08-A1-S2 95B061131	IS-08-A1-03 95B061121
10-30 Vdc	PNP NC	3 wires	order No.	IS-08-A2-S1 95B061171	IS-08-A2-S2 95B061161	IS-08-A2-03 95B061151
10-30 Vdc	NPN NO	3 wires	order No.	IS-08-A3-S1 95B061081	IS-08-A3-S2 95B061071	IS-08-A3-03 95B061061
10-30 Vdc	NPN NC	3 wires	order No.	IS-08-A4-S1 95B061111	IS-08-A4-S2 95B061101	IS-08-A4-03 95B061091
10-30 Vdc	PNP NO-NC	4 wires	order No.	---	---	---
10-30 Vdc	NPN NO-NC	4 wires	order No.	---	---	---
10-30 Vdc	NO-NC	2 wires	order No.	---	---	---
20-250 Vac/Vdc	NO	2 wires	order No.	---	---	---
20-250 Vac/Vdc	NC	2 wires	order No.	---	---	---
20-250 Vac	NO	2/3 wires	order No.	---	---	---
10-30 Vdc	Analog 0-20 mA	3 wires	order No.	---	---	---
NAMUR amplifier	NAMUR	2 wires	order No.	---	---	---

<b>Nominal Voltage</b>	10-30 Vdc (-15/10%)	10-30 Vdc (-15/10%)	10-30 Vdc (-15/10%)
<b>Residual Ripple</b>	< 10%	< 10%	< 10%
<b>Hysteresis</b>	< 10%	< 10%	< 10%
<b>Max. Output Current</b>	200mA	200mA	200mA
<b>Min. Output Current</b>	---	---	---
<b>Residual Current</b>	< 10 mA	< 10 mA	< 10 mA
<b>Voltage Drop</b>	< 1,2 V (I=100mA)	< 1,2 V (I=100mA)	< 1,2 V (I=100mA)
<b>Operation Led</b>	Yellow	Yellow	Yellow
<b>Switching Frequency</b>	1000 Hz	1000 Hz	1000 Hz
<b>Start Up Delay</b>	< 50 ms	< 50 ms	< 50 ms
<b>Repeatability</b>	< 3%	< 3%	< 3%
<b>Short Circuit Protection</b>	Present (self-resetting)	Present (self-resetting)	Present (self-resetting)
<b>Electric Protection</b>	Against polarity reversal inductive loads	Against polarity reversal inductive loads	Against polarity reversal inductive loads
<b>Temperature Limit</b>	(-25 ... +70 °C)	(-25 ... +70 °C)	(-25 ... +70 °C)
<b>Protection Degree</b>	IP67	IP67	IP67
<b>Cable Length</b>	---	---	2 m
<b>Cable Section</b>	---	---	3x 0,14 mm <sup>2</sup>
<b>Housing Material</b>	Nickel-plated brass	Nickel-plated brass	Nickel-plated brass
<b>Active face</b>	LCP	LCP	LCP
<b>Tightening torque</b>	* see page 5 of the Inductive Sensors Catalog	* see page 5 of the Inductive Sensors Catalog	* see page 5 of the Inductive Sensors Catalog
<b>Weight - Cable Output</b>	---	---	80 g
<b>Weight - Connector Output</b>	35g	55g	---



# BASIC M8



## SHORT

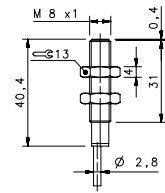
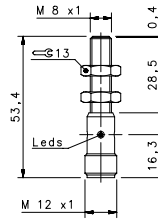
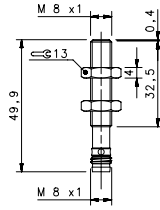
### FLUSH

				M8 conn	M12 conn	cable
				1,5 mm	1,5 mm	1,5 mm
10-30 Vdc	PNP/NPN NO-NC	4 wires	order No.	---	---	---
10-30 Vdc	PNP NO	3 wires	order No.	IS-08-B1-S1 95B066860	IS-08-B1-S2 95B066590	IS-08-B1-03 95B061921
10-30 Vdc	PNP NC	3 wires	order No.	IS-08-B2-S1 95B066890	IS-08-B2-S2 95B066620	IS-08-B2-03 95B061951
10-30 Vdc	NPN NO	3 wires	order No.	IS-08-B3-S1 95B066810	IS-08-B3-S2 95B066530	IS-08-B3-03 95B061861
10-30 Vdc	NPN NC	3 wires	order No.	IS-08-B4-S1 95B066830	IS-08-B4-S2 95B066560	IS-08-B4-03 95B061891
10-30 Vdc	PNP NO-NC	4 wires	order No.	---	---	---
10-30 Vdc	NPN NO-NC	4 wires	order No.	---	---	---
10-30 Vdc	NO-NC	2 wires	order No.	---	---	---
20-250 Vac/Vdc	NO	2 wires	order No.	---	---	---
20-250 Vac/Vdc	NC	2 wires	order No.	---	---	---
20-250 Vac	NO	2/3 wires	order No.	---	---	---
10-30 Vdc	Analog 0-20 mA	3 wires	order No.	---	---	---
NAMUR amplifier	NAMUR	2 wires	order No.	---	---	---

<b>Nominal Voltage</b>	10-30 Vdc (-15/10%)	10-30 Vdc (-15/10%)	10-30 Vdc (-15/10%)
<b>Residual Ripple</b>	< 10%	< 10%	< 10%
<b>Hysteresis</b>	< 10%	< 10%	< 10%
<b>Max. Output Current</b>	200mA	200mA	200mA
<b>Min. Output Current</b>	---	---	---
<b>Residual Current</b>	< 10 mA	< 10 mA	< 10 mA
<b>Voltage Drop</b>	< 1,2 V (I=100mA)	< 1,2 V (I=100mA)	< 1,2 V (I=100mA)
<b>Operation Led</b>	Yellow	Yellow	Yellow
<b>Switching Frequency</b>	1000 Hz	1000 Hz	1000 Hz
<b>Start Up Delay</b>	< 50 ms	< 50 ms	< 50 ms
<b>Repeatability</b>	< 3%	< 3%	< 3%
<b>Short Circuit Protection</b>	Present (self-resetting)	Present (self-resetting)	Present (self-resetting)
<b>Electric Protection</b>	Against polarity reversal inductive loads	Against polarity reversal inductive loads	Against polarity reversal inductive loads
<b>Temperature Limit</b>	(-25 ... +70 °C)	(-25 ... +70 °C)	(-25 ... +70 °C)
<b>Protection Degree</b>	IP67	IP67	IP67
<b>Cable Length</b>	---	---	2 m
<b>Cable Section</b>	---	---	3 x 0,14 mm <sup>2</sup>
<b>Housing Material</b>	Nickel-plated brass	Nickel-plated brass	Nickel-plated brass
<b>Active face</b>	LCP	LCP	LCP
<b>Tightening torque</b>	* see page 5 of the Inductive Sensors Catalog	* see page 5 of the Inductive Sensors Catalog	* see page 5 of the Inductive Sensors Catalog
<b>Weight - Cable Output</b>	---	---	80 g
<b>Weight - Connector Output</b>	35g	55g	---



# BASIC M8



## SHORT X2

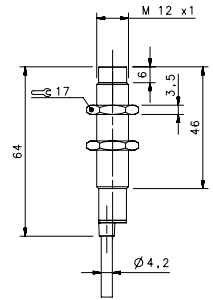
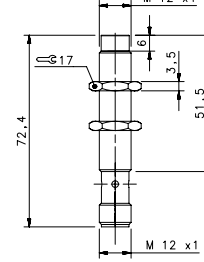
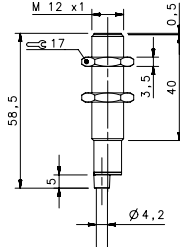
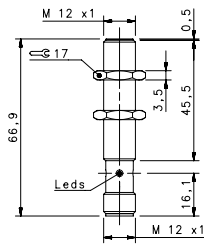
### FLUSH

				M8 conn	M12 conn	cable
NOMINAL SWITCHING DISTANCE				2 mm	2 mm	2 mm
10-30 Vdc	PNP/NPN NO-NC	4 wires	order No.	---	---	---
10-30 Vdc	PNP NO	3 wires	order No.	IS-08-G1-S1 95B066850	IS-08-G1-S2 95B066580	IS-08-G1-03 95B066370
10-30 Vdc	PNP NC	3 wires	order No.	IS-08-G2-S1 95B066880	IS-08-G2-S2 95B066610	IS-08-G2-03 95B066390
10-30 Vdc	NPN NO	3 wires	order No.	IS-08-G3-S1 95B066800	IS-08-G3-S2 95B066520	IS-08-G3-03 95B066330
10-30 Vdc	NPN NC	3 wires	order No.	IS-08-G4-S1 95B063131	IS-08-G4-S2 95B066550	IS-08-G4-03 95B066350
10-30 Vdc	PNP NO-NC	4 wires	order No.	---	---	---
10-30 Vdc	NPN NO-NC	4 wires	order No.	---	---	---
10-30 Vdc	NO-NC	2 wires	order No.	---	---	---
20-250 Vac/Vdc	NO	2 wires	order No.	---	---	---
20-250 Vac/Vdc	NC	2 wires	order No.	---	---	---
20-250 Vac	NO	2/3 wires	order No.	---	---	---
10-30 Vdc	Analog 0-20 mA	3 wires	order No.	---	---	---
NAMUR amplifier	NAMUR	2 wires	order No.	---	---	---

<b>Nominal Voltage</b>	10-30 Vdc (-15/10%)	10-30 Vdc (-15/10%)	10-30 Vdc (-15/10%)
<b>Residual Ripple</b>	< 10%	< 10%	< 10%
<b>Hysteresis</b>	< 10%	< 10%	< 10%
<b>Max. Output Current</b>	200mA	200mA	200mA
<b>Min. Output Current</b>	---	---	---
<b>Residual Current</b>	< 10 mA	< 10 mA	< 10 mA
<b>Voltage Drop</b>	< 1,2 V (I=100mA)	< 1,2 V (I=100mA)	< 1,2 V (I=100mA)
<b>Operation Led</b>	Yellow	Yellow	Yellow
<b>Switching Frequency</b>	500 Hz	500 Hz	500 Hz
<b>Start Up Delay</b>	< 75 ms	< 75 ms	< 75 ms
<b>Repeatability</b>	< 3%	< 3%	< 3%
<b>Short Circuit Protection</b>	Present (self-resetting)	Present (self-resetting)	Present (self-resetting)
<b>Electric Protection</b>	Against polarity reversal inductive loads	Against polarity reversal inductive loads	Against polarity reversal inductive loads
<b>Temperature Limit</b>	(-25 ... +60 °C)	(-25 ... +60 °C)	(-25 ... +70 °C)
<b>Protection Degree</b>	IP67	IP67	IP67
<b>Cable Length</b>	---	---	2 m
<b>Cable Section</b>	---	---	3 x 0,14 mm <sup>2</sup>
<b>Housing Material</b>	Nickel-plated brass	Nickel-plated brass	Nickel-plated brass
<b>Active face</b>	LCP	LCP	LCP
<b>Tightening torque</b>	* see page 5 of the Inductive Sensors Catalog	* see page 5 of the Inductive Sensors Catalog	* see page 5 of the Inductive Sensors Catalog
<b>Weight - Cable Output</b>	---	---	80 g
<b>Weight - Connector Output</b>	35g	55g	---



# BASIC M12



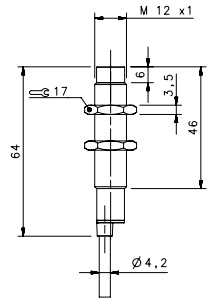
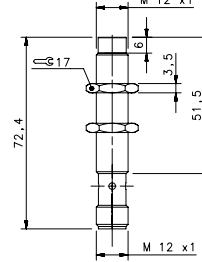
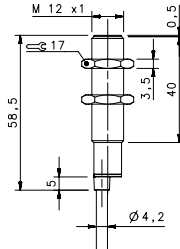
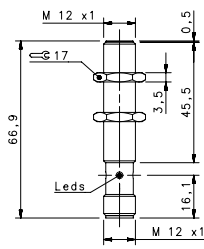
## STANDARD

				FLUSH		NON FLUSH	
				M12 conn	cable	M12 conn	cable
<b>NOMINAL SWITCHING DISTANCE</b>				2 mm	2 mm	4 mm	4 mm
10-30 Vdc	PNP/NPN NO-NC	4 wires	order No.	IS-12-A0-S2 95B064060	IS-12-A0-03 95B064030	IS-12-C0-S2 95B064080	IS-12-C0-03 95B064040
10-30 Vdc	PNP NO	3 wires	order No.	IS-12-A1-S2 95B061251	IS-12-A1-03 95B061241	IS-12-C1-S2 95B061651	IS-12-C1-03 95B061641
10-30 Vdc	PNP NC	3 wires	order No.	IS-12-A2-S2 95B061281	IS-12-A2-03 95B061271	IS-12-C2-S2 95B061681	IS-12-C2-03 95B061671
10-30 Vdc	NPN NO	3 wires	order No.	IS-12-A3-S2 95B061191	IS-12-A3-03 95B061181	IS-12-C3-S2 95B061591	IS-12-C3-03 95B061581
10-30 Vdc	NPN NC	3 wires	order No.	IS-12-A4-S2 95B061221	IS-12-A4-03 95B061211	IS-12-C4-S2 95B061621	IS-12-C4-03 95B061611
10-30 Vdc	PNP NO-NC	4 wires	order No.	---	---	---	---
10-30 Vdc	NPN NO-NC	4 wires	order No.	---	---	---	---
10-30 Vdc	NO-NC	2 wires	order No.	IS-12-A9-S2 95B063931	IS-12-A9-03 95B064100	IS-12-C9-S2 95B064140	IS-12-C9-03 95B064110
20-250 Vac/Vdc	NO	2 wires	order No.	---	---	---	---
20-250 Vac/Vdc	NC	2 wires	order No.	---	---	---	---
20-250 Vac	NO	2/3 wires	order No.	---	---	---	---
10-30 Vdc	Analog 0-20 mA	3 wires	order No.	---	---	---	---
NAMUR amplifier	NAMUR	2 wires	order No.	---	---	---	---

<b>Nominal Voltage</b>	10-30 Vdc (-15/10%)	10-30 Vdc (-15/10%)	10-30 Vdc (-15/10%)	10-30 Vdc (-15/10%)
<b>Residual Ripple</b>	< 10%	< 10%	< 10%	< 10%
<b>Hysteresis</b>	< 10%	< 10%	< 10%	< 10%
<b>Max. Output Current</b>	200mA; 100 mA (2wires)	200mA; 100 mA (2wires)	200mA; 100 mA (2wires)	200mA; 100 mA (2wires)
<b>Min. Output Current</b>	> 1,6 mA (2wires)	> 1,6 mA (2wires)	> 1,6 mA (2wires)	> 1,6 mA (2wires)
<b>Residual Current</b>	< 10mA; < 1,6 mA (2wires)	< 10mA; < 1,6 mA (2wires)	< 10mA; < 1,6 mA (2wires)	< 10mA; < 1,6 mA (2wires)
<b>Voltage Drop</b>	< 1,8V; < 6,5 V (2wires)	< 1,8V; < 6,5 V (2wires)	< 1,8V; < 6,5 V (2wires)	< 1,8V; < 6,5 V (2wires)
<b>Operation Led</b>	Yellow	Yellow	Yellow	Yellow
<b>Switching Frequency</b>	1000 Hz/200 Hz (2 wires NO-NC)	1000 Hz/200 Hz (2 wires NO-NC)	1000 Hz/200 Hz (2 wires NO-NC)	1000 Hz/200 Hz (2 wires NO-NC)
<b>Start Up Delay</b>	< 50 ms	< 50 ms	< 50 ms	< 50 ms
<b>Repeatability</b>	< 3%	< 3%	< 3%	< 3%
<b>Short Circuit Protection</b>	Present (self-resetting)	Present (self-resetting)	Present (self-resetting)	Present (self-resetting)
<b>Electric Protection</b>	Against polarity reversal inductive loads	Against polarity reversal inductive loads	Against polarity reversal inductive loads	Against polarity reversal inductive loads
<b>Temperature Limit</b>	(-25 ... +70 °C)	(-25 ... +70 °C)	(-25 ... +70 °C)	(-25 ... +70 °C)
<b>Protection Degree</b>	IP67	IP67	IP67	IP67
<b>Cable Length</b>	---	2 m	---	2 m
<b>Cable Section</b>	---	2 x 0,34 mm <sup>2</sup> 3 x 0,14 mm <sup>2</sup> 4 x 0,25 mm <sup>2</sup>	---	2 x 0,34 mm <sup>2</sup> 3 x 0,14 mm <sup>2</sup> 4 x 0,25 mm <sup>2</sup>
<b>Housing Material</b>	Nickel-plated brass	Nickel-plated brass	Nickel-plated brass	Nickel-plated brass
<b>Active face</b>	LCP	LCP	LCP	LCP
<b>Tightening torque</b>	* see page 5 of the Inductive Sensors Catalog	* see page 5 of the Inductive Sensors Catalog	* see page 5 of the Inductive Sensors Catalog	* see page 5 of the Inductive Sensors Catalog
<b>Weight - Cable Output</b>	---	110 g	---	110 g
<b>Weight - Connector Output</b>	60 g	---	60 g	---



# BASIC M12

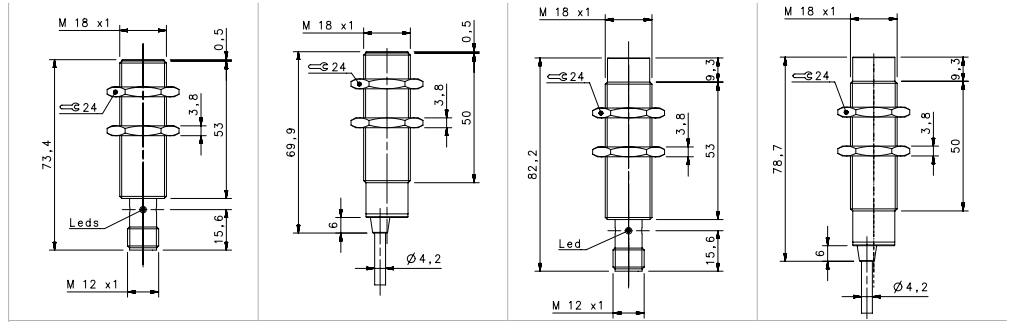


## STANDARD X2

				FLUSH		NON FLUSH	
				M12 conn	cable	M12 conn	cable
NOMINAL SWITCHING DISTANCE				4 mm		8 mm	
10-30 Vdc	PNP/NPN NO-NC	4 wires	order No.	IS-12-E0-S2 95B067230	IS-12-E0-03 95B067190	IS-12-F0-S2 95B067250	IS-12-F0-03 95B067210
10-30 Vdc	PNP NO	3 wires	order No.	IS-12-E1-S2 95B067030	IS-12-E1-03 95B067670	IS-12-F1-S2 95B067020	IS-12-F1-03 95B067740
10-30 Vdc	PNP NC	3 wires	order No.	IS-12-E2-S2 95B067640	IS-12-E2-03 95B067680	IS-12-F2-S2 95B067710	IS-12-F2-03 95B067750
10-30 Vdc	NPN NO	3 wires	order No.	IS-12-E3-S2 95B067650	IS-12-E3-03 95B067690	IS-12-F3-S2 95B067720	IS-12-F3-03 95B067760
10-30 Vdc	NPN NC	3 wires	order No.	IS-12-E4-S2 95B067660	IS-12-E4-03 95B067700	IS-12-F4-S2 95B067730	IS-12-F4-03 95B067770
10-30 Vdc	PNP NO-NC	4 wires	order No.	---	---	---	---
10-30 Vdc	NPN NO-NC	4 wires	order No.	---	---	---	---
10-30 Vdc	NO-NC	2 wires	order No.	IS-12-E9-S2 95B067240	IS-12-E9-03 95B067200	IS-12-F9-S2 95B067260	IS-12-F9-03 95B067220
20-250 Vac/Vdc	NO	2 wires	order No.	---	---	---	---
20-250 Vac/Vdc	NC	2 wires	order No.	---	---	---	---
20-250 Vac	NO	2/3 wires	order No.	---	---	---	---
10-30 Vdc	Analog 0-20 mA	3 wires	order No.	---	---	---	---
NAMUR amplifier	NAMUR	2 wires	order No.	---	---	---	---
<b>Nominal Voltage</b>				10-30 Vdc (-15/10%)	10-30 Vdc (-15/10%)	10-30 Vdc (-15/10%)	10-30 Vdc (-15/10%)
<b>Residual Ripple</b>				< 10%	< 10%	< 10%	< 10%
<b>Hysteresis</b>				< 10%	< 10%	< 10%	< 10%
<b>Max. Output Current</b>				100 mA	100 mA	100 mA	100 mA
<b>Min. Output Current</b>				---	---	---	---
<b>Residual Current</b>				< 10 mA	< 10 mA	< 10 mA	< 10 mA
<b>Voltage Drop</b>				< 1,2 V (I=100mA)	< 1,2 V (I=100mA)	< 1,2 V (I=100mA)	< 1,2 V (I=100mA)
<b>Operation Led</b>				Yellow	Yellow	Yellow	Yellow
<b>Switching Frequency</b>				500 Hz/200 Hz (2 wires NO-NC)	500 Hz/200 Hz (2 wires NO-NC)	400 Hz/200 Hz (2 wires NO-NC)	400 Hz/200 Hz (2 wires NO-NC)
<b>Start Up Delay</b>				< 75 ms	< 75 ms	< 75 ms	< 75 ms
<b>Repeatability</b>				< 3%	< 3%	< 3%	< 3%
<b>Short Circuit Protection</b>				Present (self-resetting)	Present (self-resetting)	Present (self-resetting)	Present (self-resetting)
<b>Electric Protection</b>				Against polarity reversal inductive loads	Against polarity reversal inductive loads	Against polarity reversal inductive loads	Against polarity reversal inductive loads
<b>Temperature Limit</b>				(-25 ... +70 °C)	(-25 ... +70 °C)	(-25 ... +70 °C)	(-25 ... +70 °C)
<b>Protection Degree</b>				IP67	IP67	IP67	IP67
<b>Cable Length</b>				---	---	---	---
<b>Cable Section</b>				---	2 x 0,34 mm <sup>2</sup> 3 x 0,14 mm <sup>2</sup> 4 x 0,25 mm <sup>2</sup>	---	2 x 0,34 mm <sup>2</sup> 3 x 0,14 mm <sup>2</sup> 4 x 0,25 mm <sup>2</sup>
<b>Housing Material</b>				Nickel-plated brass	Nickel-plated brass	Nickel-plated brass	Nickel-plated brass
<b>Active face</b>				LCP	LCP	LCP	LCP
<b>Tightening torque</b>				* see page 5 of the Inductive Sensors Catalog	* see page 5 of the Inductive Sensors Catalog	* see page 5 of the Inductive Sensors Catalog	* see page 5 of the Inductive Sensors Catalog
<b>Weight - Cable Output</b>				---	---	---	---
<b>Weight - Connector Output</b>				60 g	60 g	60 g	60 g



# BASIC M18



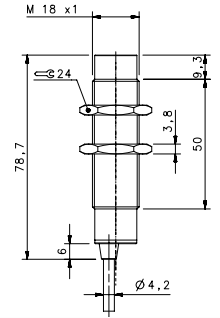
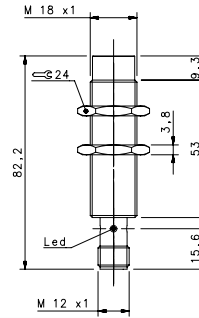
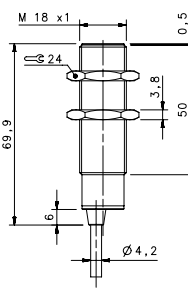
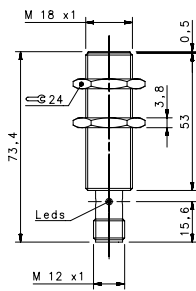
## STANDARD

				FLUSH		NON FLUSH	
				M12 conn	cable	M12 conn	cable
<b>NOMINAL SWITCHING DISTANCE</b>				5 mm	5 mm	8 mm	8 mm
10-30 Vdc	PNP/NPN NO-NC	4 wires	order No.	IS-18-A0-S2 95B064260	IS-18-A0-03 95B064230	IS-18-C0-S2 95B064280	IS-18-C0-03 95B064240
10-30 Vdc	PNP NO	3 wires	order No.	IS-18-A1-S2 95B061351	IS-18-A1-03 95B061341	IS-18-C1-S2 95B061751	IS-18-C1-03 95B061741
10-30 Vdc	PNP NC	3 wires	order No.	IS-18-A2-S2 95B061371	IS-18-A2-03 95B061361	IS-18-C2-S2 95B061771	IS-18-C2-03 95B061761
10-30 Vdc	NPN NO	3 wires	order No.	IS-18-A3-S2 95B061311	IS-18-A3-03 95B061301	IS-18-C3-S2 95B061711	IS-18-C3-03 95B061701
10-30 Vdc	NPN NC	3 wires	order No.	IS-18-A4-S2 95B061331	IS-18-A4-03 95B061321	IS-18-C4-S2 95B061731	IS-18-C4-03 95B061721
10-30 Vdc	PNP NO-NC	4 wires	order No.	---	---	---	---
10-30 Vdc	NPN NO-NC	4 wires	order No.	---	---	---	---
10-30 Vdc	NO-NC	2 wires	order No.	IS-18-A9-S2 95B063941	S-18-A9-03 95B064300	IS-18-C9-S2 95B064340	IS-18-C9-03 95B064310
20-250 Vac/Vdc	NO	2 wires	order No.	---	---	---	---
20-250 Vac/Vdc	NC	2 wires	order No.	---	---	---	---
20-250 Vac	NO	2/3 wires	order No.	---	---	---	---
10-30 Vdc	Analog 0-20 mA	3 wires	order No.	---	---	---	---
NAMUR amplifier	NAMUR	2 wires	order No.	---	---	---	---

<b>Nominal Voltage</b>	10-30 Vdc (-15/10%)	10-30 Vdc (-15/10%)	10-30 Vdc (-15/10%)	10-30 Vdc (-15/10%)
<b>Residual Ripple</b>	< 10%	< 10%	< 10%	< 10%
<b>Hysteresis</b>	< 10%	< 10%	< 10%	< 10%
<b>Max. Output Current</b>	200 mA	200 mA	200 mA	200 mA
<b>Min. Output Current</b>	> 1,6 mA (2wires ver.)	> 1,6 mA (2wires ver.)	> 1,6 mA (2wires ver.)	> 1,6 mA (2wires ver.)
<b>Residual Current</b>	< 10 mA	< 10 mA	< 10 mA	< 10 mA
<b>Voltage Drop</b>	< 1,8V; < 6,5 V (2wires ver.)	< 1,8V; < 6,5 V (2wires ver.)	< 1,8V; < 6,5 V (2wires ver.)	< 1,8V; < 6,5 V (2wires ver.)
<b>Operation Led</b>	Yellow	Yellow	Yellow	Yellow
<b>Switching Frequency</b>	1000 Hz/200 Hz (2 wires NO-NC)	1000 Hz/200 Hz (2 wires NO-NC)	1000 Hz/200 Hz (2 wires NO-NC)	1000 Hz/200 Hz (2 wires NO-NC)
<b>Start Up Delay</b>	< 50 ms	< 50 ms	< 50 ms	< 50 ms
<b>Repeatability</b>	< 3%	< 3%	< 3%	< 3%
<b>Short Circuit Protection</b>	Present (self-resetting)	Present (self-resetting)	Present (self-resetting)	Present (self-resetting)
<b>Electric Protection</b>	Against polarity reversal inductive loads	Against polarity reversal inductive loads	Against polarity reversal inductive loads	Against polarity reversal inductive loads
<b>Temperature Limit</b>	(-25 ... +60 °C)	(-25 ... +60 °C)	(-25 ... +60 °C)	(-25 ... +60 °C)
<b>Protection Degree</b>	IP67	IP67	IP67	IP67
<b>Cable Length</b>	---	2 m	---	2 m
<b>Cable Section</b>	---	2 x 0,34 mm <sup>2</sup> 3 x 0,14 mm <sup>2</sup> 4 x 0,25 mm <sup>2</sup>	---	2 x 0,34 mm <sup>2</sup> 3 x 0,14 mm <sup>2</sup> 4 x 0,25 mm <sup>2</sup>
<b>Housing Material</b>	Nickel-plated brass	Nickel-plated brass	Nickel-plated brass	Nickel-plated brass
<b>Active face</b>	LCP	LCP	LCP	LCP
<b>Tightening torque</b>	* see page 5 of the Inductive Sensors Catalog	* see page 5 of the Inductive Sensors Catalog	* see page 5 of the Inductive Sensors Catalog	* see page 5 of the Inductive Sensors Catalog
<b>Weight - Cable Output</b>	---	145g	---	145g
<b>Weight - Connector Output</b>	95g	---	95g	---



# BASIC M18



## STANDARD X2

FLUSH

NON FLUSH

M12 conn

cable

M12 conn

cable

### NOMINAL SWITCHING DISTANCE

8 mm

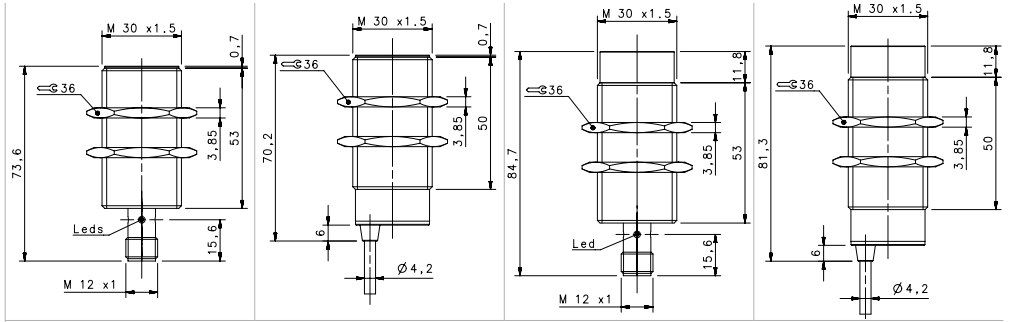
14 mm

			8 mm		14 mm		
10-30 Vdc	PNP/NPN NO-NC	4 wires	order No.	IS-18-E0-S2 95B067310	IS-18-E0-03 95B067270	IS-18-F0-S2 95B067330	IS-18-F0-03 95B067290
10-30 Vdc	PNP NO	3 wires	order No.	IS-18-E1-S2 95B067050	IS-18-E1-03 95B067810	IS-18-F1-S2 95B067040	IS-18-F1-03 95B067880
10-30 Vdc	PNP NC	3 wires	order No.	IS-18-E2-S2 95B067780	IS-18-E2-03 95B067820	IS-18-F2-S2 95B067850	IS-18-F2-03 95B067890
10-30 Vdc	NPN NO	3 wires	order No.	IS-18-E3-S2 95B067790	IS-18-E3-03 95B067830	IS-18-F3-S2 95B067860	IS-18-F3-03 95B067900
10-30 Vdc	NPN NC	3 wires	order No.	IS-18-E4-S2 95B067800	IS-18-E4-03 95B067840	IS-18-F4-S2 95B067870	IS-18-F4-03 95B067910
10-30 Vdc	PNP NO-NC	4 wires	order No.	---	---	---	---
10-30 Vdc	NPN NO-NC	4 wires	order No.	---	---	---	---
10-30 Vdc	NO-NC	2 wires	order No.	IS-18-E9-S2 95B067320	IS-18-E9-03 95B067280	IS-18-F9-S2 95B067340	IS-18-F9-03 95B067300
20-250 Vac/Vdc	NO	2 wires	order No.	---	---	---	---
20-250 Vac/Vdc	NC	2 wires	order No.	---	---	---	---
20-250 Vac	NO	2/3 wires	order No.	---	---	---	---
10-30 Vdc	Analog 0-20 mA	3 wires	order No.	---	---	---	---
NAMUR amplifier	NAMUR	2 wires	order No.	---	---	---	---

<b>Nominal Voltage</b>	10-30 Vdc (-15/10%)	10-30 Vdc (-15/10%)	10-30 Vdc (-15/10%)	10-30 Vdc (-15/10%)
<b>Residual Ripple</b>	< 10%	< 10%	< 10%	< 10%
<b>Hysteresis</b>	< 10%	< 10%	< 10%	< 10%
<b>Max. Output Current</b>	200 mA	200 mA	200 mA	200 mA
<b>Min. Output Current</b>	---	---	---	---
<b>Residual Current</b>	< 10 mA	< 10 mA	< 10 mA	< 10 mA
<b>Voltage Drop</b>	< 1,2 V (I=100mA)	< 1,2 V (I=100mA)	< 1,2 V (I=100mA)	< 1,2 V (I=100mA)
<b>Operation Led</b>	Yellow	Yellow	Yellow	Yellow
<b>Switching Frequency</b>	400 Hz	400 Hz	100 Hz	100 Hz
<b>Start Up Delay</b>	< 50 ms	< 50 ms	< 50 ms	< 50 ms
<b>Repeatability</b>	< 3%	< 3%	< 3%	< 3%
<b>Short Circuit Protection</b>	Present (self-resetting)	Present (self-resetting)	Present (self-resetting)	Present (self-resetting)
<b>Electric Protection</b>	Against polarity reversal inductive loads	Against polarity reversal inductive loads	Against polarity reversal inductive loads	Against polarity reversal inductive loads
<b>Temperature Limit</b>	(-25 ... +70 °C)	(-25 ... +70 °C)	(-25 ... +70 °C)	(-25 ... +70 °C)
<b>Protection Degree</b>	IP67	IP67	IP67	IP67
<b>Cable Length</b>	---	---	---	---
<b>Cable Section</b>	---	2 x 0,34 mm <sup>2</sup> 3 x 0,14 mm <sup>2</sup> 4 x 0,25 mm <sup>2</sup>	---	2 x 0,34 mm <sup>2</sup> 3 x 0,14 mm <sup>2</sup> 4 x 0,25 mm <sup>2</sup>
<b>Housing Material</b>	Nickel-plated brass	Nickel-plated brass	Nickel-plated brass	Nickel-plated brass
<b>Active face</b>	LCP	LCP	LCP	LCP
<b>Tightening torque</b>	* see page 5 of the Inductive Sensors Catalog	* see page 5 of the Inductive Sensors Catalog	* see page 5 of the Inductive Sensors Catalog	* see page 5 of the Inductive Sensors Catalog
<b>Weight - Cable Output</b>	---	---	145g	145g
<b>Weight - Connector Output</b>	95g	95g	---	---



# BASIC M30

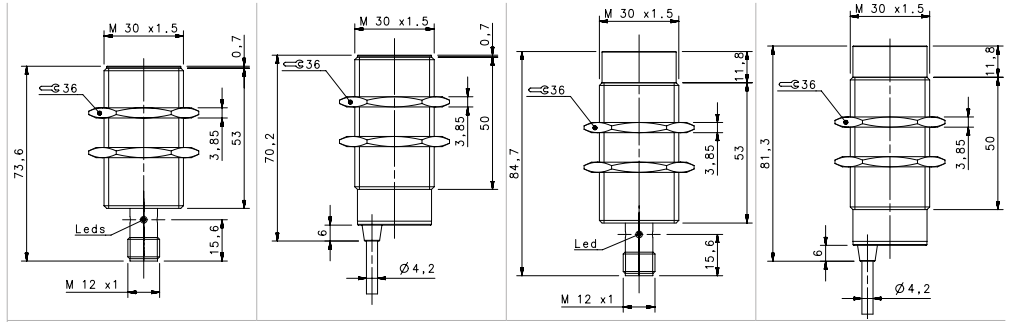


## STANDARD

				FLUSH		NON FLUSH	
				M12 conn	cable	M12 conn	cable
<b>NOMINAL SWITCHING DISTANCE</b>				10 mm	10 mm	15 mm	15 mm
10-30 Vdc	PNP/NPN NO-NC	4 wires	order No.	IS-30-A0-S2 95B064490	IS-30-A0-03 95B064460	IS-30-C0-S2 95B064510	IS-30-C0-03 95B064470
10-30 Vdc	PNP NO	3 wires	order No.	IS-30-A1-S2 95B061431	IS-30-A1-03 95B061421	IS-30-C1-S2 95B061831	IS-30-C1-03 95B061821
10-30 Vdc	PNP NC	3 wires	order No.	IS-30-A2-S2 95B061451	IS-30-A2-03 95B061441	IS-30-C2-S2 95B061851	IS-30-C2-03 95B061841
10-30 Vdc	NPN NO	3 wires	order No.	IS-30-A3-S2 95B061391	IS-30-A3-03 95B061381	IS-30-C3-S2 95B061791	IS-30-C3-03 95B061781
10-30 Vdc	NPN NC	3 wires	order No.	IS-30-A4-S2 95B061411	IS-30-A4-03 95B061401	IS-30-C4-S2 95B061811	IS-30-C4-03 95B061801
10-30 Vdc	PNP NO-NC	4 wires	order No.	---	---	---	---
10-30 Vdc	NPN NO-NC	4 wires	order No.	---	---	---	---
10-30 Vdc	NO-NC	2 wires	order No.	IS-30-A9-S2 95B064570	IS-30-A9-03 95B064530	IS-30-C9-S2 95B064590	IS-30-C9-03 95B064550
20-250 Vac/Vdc	NO	2 wires	order No.	---	---	---	---
20-250 Vac/Vdc	NC	2 wires	order No.	---	---	---	---
20-250 Vac	NO	2/3 wires	order No.	---	---	---	---
10-30 Vdc	Analog 0-20 mA	3 wires	order No.	---	---	---	---
NAMUR amplifier	NAMUR	2 wires	order No.	---	---	---	---
<b>Nominal Voltage</b>				10-30 Vdc (-15%/10%)	10-30 Vdc (-15%/10%)	10-30 Vdc (-15%/10%)	10-30 Vdc (-15%/10%)
<b>Residual Ripple</b>				< 10%	< 10%	< 10%	< 10%
<b>Hysteresis</b>				< 10%	< 10%	< 10%	< 10%
<b>Max. Output Current</b>				200mA; 100 mA (2wires)	200mA; 100 mA (2wires)	200mA; 100 mA (2wires)	200mA; 100 mA (2wires)
<b>Min. Output Current</b>				> 1,6 mA (2wires)	> 1,6 mA (2wires)	> 1,6 mA (2wires)	> 1,6 mA (2wires)
<b>Residual Current</b>				< 1,6 mA	< 1,6 mA	< 1,6 mA	< 1,6 mA
<b>Voltage Drop</b>				< 1,8V; < 6,5 V (2wires)	< 1,8V; < 6,5 V (2wires)	< 1,8V; < 6,5 V (2wires)	< 1,8V; < 6,5 V (2wires)
<b>Operation Led</b>				Yellow	Yellow	Yellow	Yellow
<b>Switching Frequency</b>				300 Hz/250 Hz (2 wires NO-NC)	300 Hz/250 Hz (2 wires NO-NC)	300 Hz/250 Hz (2 wires NO-NC)	300 Hz/250 Hz (2 wires NO-NC)
<b>Start Up Delay</b>				< 50 ms	< 50 ms	< 50 ms	< 50 ms
<b>Repeatability</b>				< 3%	< 3%	< 3%	< 3%
<b>Short Circuit Protection</b>				Present (self-resetting)	Present (self-resetting)	Present (self-resetting)	Present (self-resetting)
<b>Electric Protection</b>				Against polarity reversal inductive loads	Against polarity reversal inductive loads	Against polarity reversal inductive loads	Against polarity reversal inductive loads
<b>Temperature Limit</b>				(-25 ... +70 °C)	(-25 ... +70 °C)	(-25 ... +70 °C)	(-25 ... +70 °C)
<b>Protection Degree</b>				IP67	IP67	IP67	IP67
<b>Cable Length</b>				---	2 m	---	2 m
<b>Cable Section</b>				---	2 x 0,34 mm <sup>2</sup> 3 x 0,14 mm <sup>2</sup> 4 x 0,25 mm <sup>2</sup>	---	2 x 0,34 mm <sup>2</sup> 3 x 0,14 mm <sup>2</sup> 4 x 0,25 mm <sup>2</sup>
<b>Housing Material</b>				Nickel-plated brass	Nickel-plated brass	Nickel-plated brass	Nickel-plated brass
<b>Active face</b>				LCP	LCP	LCP	LCP
<b>Tightening torque</b>				* see page 5 of the Inductive Sensors Catalog	* see page 5 of the Inductive Sensors Catalog	* see page 5 of the Inductive Sensors Catalog	* see page 5 of the Inductive Sensors Catalog
<b>Weight - Cable Output</b>				---	210 g	---	210 g
<b>Weight - Connector Output</b>				170 g	---	170 g	---



# BASIC M30



## STANDARD X2

				FLUSH		NON-FLUSH	
				M12 conn	cable	M12 conn	cable
<b>NOMINAL SWITCHING DISTANCE</b>				15mm	15mm	20 mm	20 mm
10-30 Vdc	PNP/NPN NO-NC	4 wires	order No.	IS-30-E0-S2 95B067390	IS-30-E0-03 95B067350	IS-30-F0-S2 95B067410	IS-30-F0-03 95B067370
10-30 Vdc	PNP NO	3 wires	order No.	IS-30-E1-S2 95B067060	IS-30-E1-03 95B067950	IS-30-F1-S2 95B067990	IS-30-F1-03 95B068030
10-30 Vdc	PNP NC	3 wires	order No.	IS-30-E2-S2 95B067920	IS-30-E2-03 95B067960	IS-30-F2-S2 95B068000	IS-30-F2-03 95B068040
10-30 Vdc	NPN NO	3 wires	order No.	IS-30-E3-S2 95B067930	IS-30-E3-03 95B067970	IS-30-F3-S2 95B068010	IS-30-F3-03 95B068050
10-30 Vdc	NPN NC	3 wires	order No.	IS-30-E4-S2 95B067940	IS-30-E4-03 95B067980	IS-30-F4-S2 95B068020	IS-30-F4-03 95B068060
10-30 Vdc	PNP NO-NC	4 wires	order No.	---	---	---	---
10-30 Vdc	NPN NO-NC	4 wires	order No.	---	---	---	---
10-30 Vdc	NO-NC	2 wires	order No.	IS-30-E9-S2 95B067400	IS-30-E9-03 95B067360	IS-30-F9-S2 95B067420	IS-30-F9-03 95B067380
20-250 Vac/Vdc	NO	2 wires	order No.	---	---	---	---
20-250 Vac/Vdc	NC	2 wires	order No.	---	---	---	---
20-250 Vac	NO	2/3 wires	order No.	---	---	---	---
10-30 Vdc	Analog 0-20 mA	3 wires	order No.	---	---	---	---
NAMUR amplifier	NAMUR	2 wires	order No.	---	---	---	---
<b>Nominal Voltage</b>				10-30 Vdc (-15/10%)	10-30 Vdc (-15/10%)	10-30 Vdc (-15/10%)	10-30 Vdc (-15/10%)
<b>Residual Ripple</b>				< 10%	< 10%	< 10%	< 10%
<b>Hysteresis</b>				< 10%	< 10%	< 10%	< 10%
<b>Max. Output Current</b>				200 mA	200 mA	200 mA	200 mA
<b>Min. Output Current</b>				---	---	---	---
<b>Residual Current</b>				< 10 mA	< 10 mA	< 10 mA	< 10 mA
<b>Voltage Drop</b>				< 6,5 V (I=100mA)	< 6,5 V (I=100mA)	< 6,5 V (I=100mA)	< 6,5 V (I=100mA)
<b>Operation Led</b>				Yellow	Yellow	Yellow	Yellow
<b>Switching Frequency</b>				200 Hz/100 Hz (2 wires NO-NC)	200 Hz/100 Hz (2 wires NO-NC)	200 Hz/100 Hz (2 wires NO-NC)	200 Hz/100 Hz (2 wires NO-NC)
<b>Start Up Delay</b>				< 75 ms	< 75 ms	< 75 ms	< 75 ms
<b>Repeatability</b>				< 3%	< 3%	< 3%	< 3%
<b>Short Circuit Protection</b>				Present (self-resetting)	Present (self-resetting)	Present (self-resetting)	Present (self-resetting)
<b>Electric Protection</b>				Against polarity reversal inductive loads	Against polarity reversal inductive loads	Against polarity reversal inductive loads	Against polarity reversal inductive loads
<b>Temperature Limit</b>				(-25 ... +70 °C)	(-25 ... +70 °C)	(-25 ... +70 °C)	(-25 ... +70 °C)
<b>Protection Degree</b>				IP67	IP67	IP67	IP67
<b>Cable Length</b>				---	---	---	---
<b>Cable Section</b>				---	2 x 0,34 mm <sup>2</sup> 3 x 0,14 mm <sup>2</sup> 4 x 0,25 mm <sup>2</sup>	---	2 x 0,34 mm <sup>2</sup> 3 x 0,14 mm <sup>2</sup> 4 x 0,25 mm <sup>2</sup>
<b>Housing Material</b>				Nickel-plated brass	Nickel-plated brass	Nickel-plated brass	Nickel-plated brass
<b>Active face</b>				LCP	LCP	LCP	LCP
<b>Tightening torque</b>				* see page 5 of the Inductive Sensors Catalog	* see page 5 of the Inductive Sensors Catalog	* see page 5 of the Inductive Sensors Catalog	* see page 5 of the Inductive Sensors Catalog
<b>Weight - Cable Output</b>				---	---	---	---
<b>Weight - Connector Output</b>				170 g	170 g	170 g	170 g



Stainless Steel housing

M4, M5 POM active face - M6,5, M8, M12, M18, M30 LCP active face

Standard length

Short length

Normal and double range operating distance

Operating distance 0.8 ... 20 mm

M4, M5, M6,5, M8, M12, M18, M30

Cable, M8 or M12 connector

3 wires

PNP, NPN, NO, NC

IP69K protection

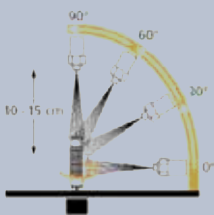
REDUCTION FACTOR

	ALUMINUM (25°C)	STAINLESS STEEL AISI316L	COPPER	BRASS
FLUSH	0,3...0,5	0,7...0,9	0,2...0,5	0,4...0,6
NON-FLUSH	0,4...0,6	0,7...1,05	0,4...0,5	0,5...0,7

M12/18/30 models are Diversey and ECOLAB tested



\*Excluded M4 and M5 models



**IP69K**

*Each Stainless Steel model is IP69K tested  
M12/18/30 models are IP69K certified*